



**BELT & ROAD ECONOMIC AND  
TRADE CENTRE (BRETC)  
CHANGSHU, JIANGSU**



**A PROPOSAL  
FOR ESTABLISHING  
TÜRKIYE 'S DISPLAY CORNER AND BUSINESS  
OFFICE**

## **Introduction**

- An initiative of IBI Group, Belt and Road Economic and Trade Centre (BRETC), is a pivotal platform to facilitate economic collaboration amongst the Belt and Road countries.
- Located in the newly built High Tech Zone in Changshu, a project of national level, BRETC would serve as a conduit for public and private sectors to attract Chinese investments in diverse sectors.
- BRETC would also facilitate trade and in particular help partner countries in expansion of their exports to China.
- The Centre would also provide a one-window solution for their procurement needs from China of essential products, equipment, machinery, chemicals and commodities.
- With its state-of-the-art meetings/conference facilities, we could host and organize business events to engage with local companies and governments to discuss and explore investment opportunities and bilateral cooperation from China to B&R countries.
- BRETC aims to strengthen the industrial and supply chains of the Belt and Road through the collaboration of governments, academia, and industry, addressing practical challenges, mitigating trade risks, and fostering high-quality economic and trade cooperation.
- BRETC would also host foreign diplomats & delegations, for briefings, presentations, business meetings and cultural exchanges to promote bilateral relations and economic cooperation.
- BRETC would also provide space to key B&R partner countries like Türkiye to set up a Display Corner for their products and cultural items, and as well as a Business Liaison Office in the country's name or by a major Turkish business group.

## **Why Changshu/Jiangsu**

- BRETC and IBI head office is based in Changshu , Suzhou city, in Jiangsu province, which is the 2<sup>nd</sup> richest province of China with a GDP of \$1.8 trillion, global trade of \$838 billion (2023), and a strong industrial sector ranging from electronics, telecommunications, chemicals, machinery and equipment, textiles, automobiles, metallurgy, new energy and EV.

- Jiangsu also boasts world class transport and communication infrastructure, and three large seaports providing efficient logistics services and world-wide connectivity.
- Suzhou/Taicang port, one the world's largest river port is located few kilometres from Changshu. Besides a global shipping network, it provides efficient, quick and personalized services as compared to busy seaports.
- Shanghai airport is one-hour drive away from Changshu; multiple options for high-speed train connectivity with major cities of China.
- Living expenses in Changshu are much less than other big cities.
- The only Chinese campus of famous international school United World College (UWC) is based in Changsha on an island in picturesque Kuncheng Lake.

## **BRETC advantages**

### **Office Space and other facilities**

- Free space for Country's Display Centre
- Free of rental cost office space (for 3 years)
- Facilitation for registration and other formalities.
- Availability of meeting/conference facilities and secretarial services.
- Facilitation for training workshops, if required.

### **Business connectivity**

- Provide facilitation for networking, meetings and field visits and benefitting from IBI's vast network of partners.
- Assist in building JV partnerships in areas of interest to Türkiye.
- Enjoy a unique market presence for your existing and new supply chain/procurements and new projects.
- Turkish companies to benefit from tax rebate on exports from China. BRETC would facilitate fast processing of tax rebates from local government.

## **Other Specific Benefits**

- Registration of a foreign company is an easy and efficient process. All necessary approvals and NOCs would be facilitated through BRETC.

- Opening company and personal bank accounts is also an efficient and fast process. IBI would assist in obtaining visa/work permits for foreign representatives to be based in BRETC. .
- Remitting money across borders is easy and there is no crunch on foreign exchange liquidity.
- Chinese Government gives tax (VAT) rebate to all companies based in China on exports of raw materials, machinery and equipment. A huge advantage of doing business from China.
- Provincial and local governments have also special funds to give extra rebates to Chinese based export-oriented companies on high export volumes.
- China is the 2<sup>nd</sup> largest import market of the world – Agro products (\$234 billion), Ores and metals (\$148 billion), Chemicals (\$187 billion), Fertilizers (\$5.6 billion), Fisheries (\$19 billion), Meat (\$14 billion), Dairy (\$12 billion).BRETC would help in connecting with this global supply chain.
- Over one million registered international companies – a large number from Europe and USA.
- China is a member of Regional Comprehensive Economic Partnership (RCEP), the largest trading bloc of the world. An opportunity for foreign countries/companies to expand industrial and supply chains to RCEP members which include ASEAN countries, Japan, South Korea, Australia and New Zealand. They would also benefit from streamlined customs procedures, unified rule of origin, reduced tariffs and improved market access.



# B&R ECONOMIC AND TRADE CENTER (BRETC) HIGH TECH ZONE, CHANGSHU



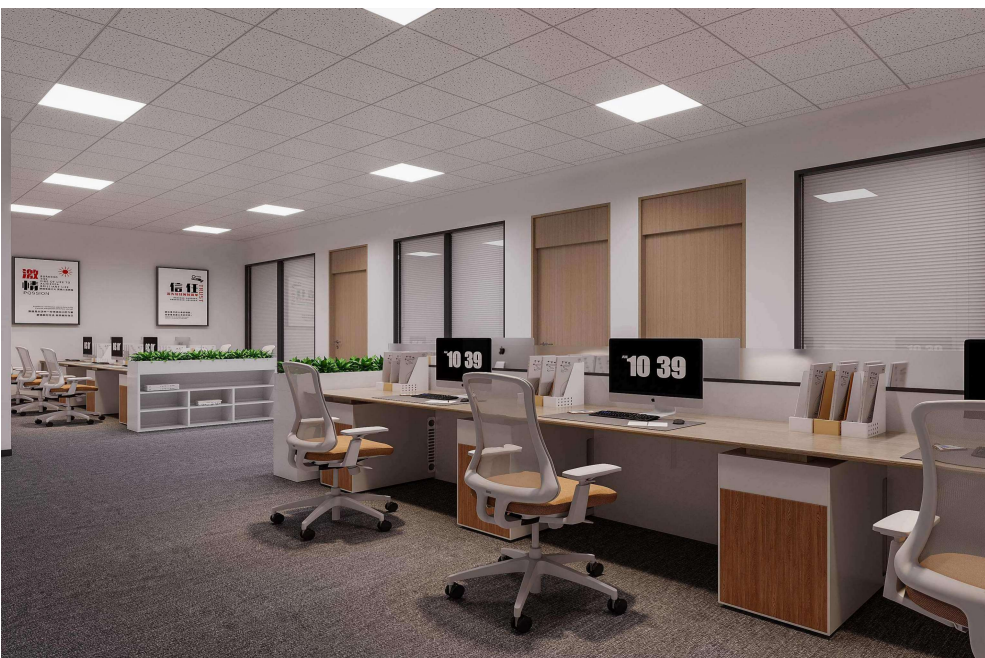
**Reception Area**



**Reception Hall**



**VIP Reception Hall**



**Business Development Department**



**Sales Department**



**Procurement Department**



**Briefing Hall**



**Meeting Room**





**Conference Room-1**



**Conference Room-2**



**Staff Cafeteria**



**Dining Room**



**Audio-visual Room**



**Sports&Fitness Centre**