

RÍO NEGRO

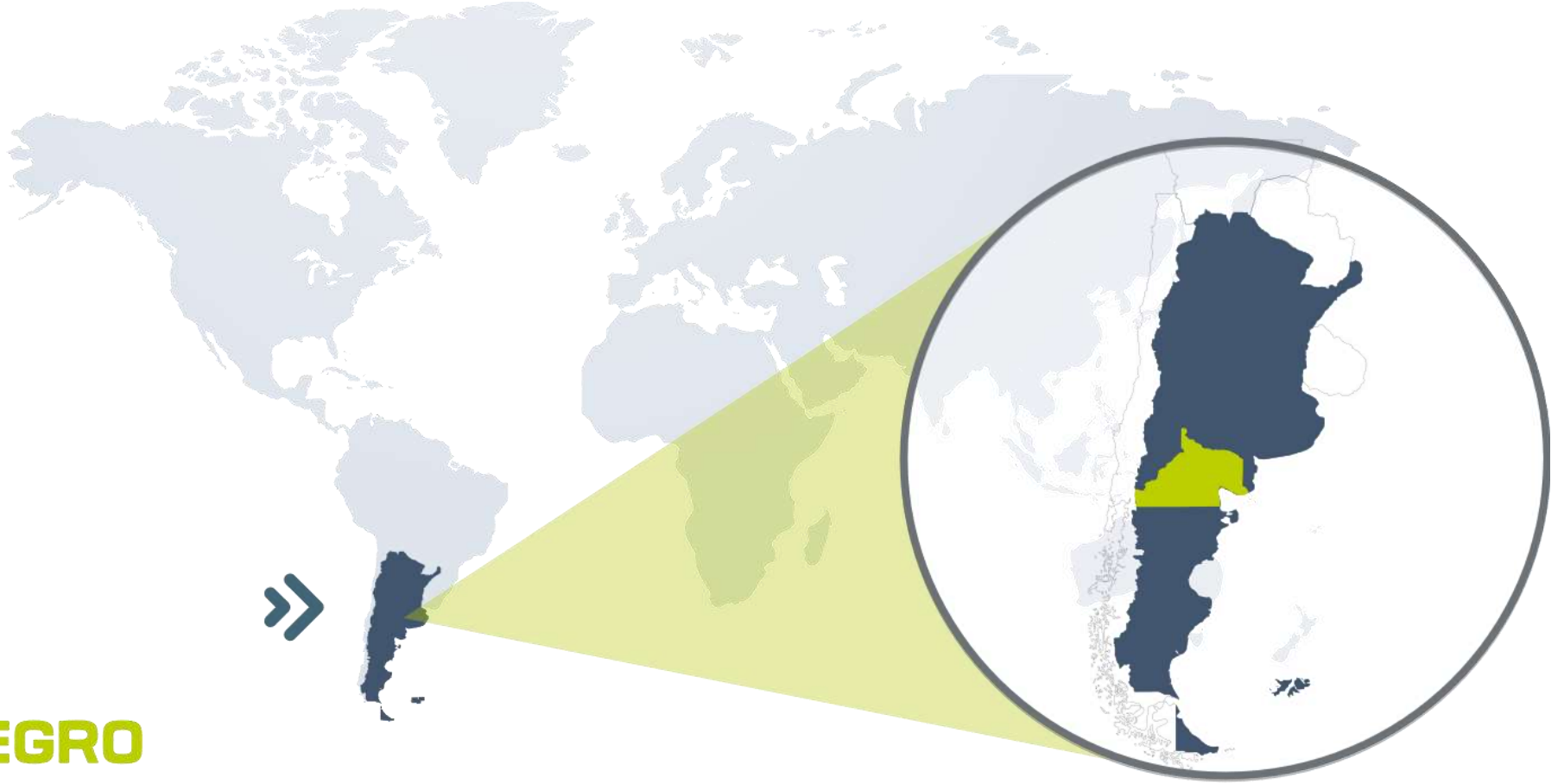
Expanding Frontiers for Mining
Development in Patagonia



RÍO NEGRO

>> ARGENTINA

>> Province of Río Negro



RiO NEGRO
ARGENTINE PATAGONIA



4070 sayılı kanun gereğince güvenli elektronik imza ile imzalanmıştır. ID:F557409B8B0843F55740. Bu kod ile <http://evrak.tim.org.tr/> adresinden doğrulayabilirsiniz.



RÍO NEGRO

Argentine Patagonia



Located north of Argentine Patagonia

DIVIDED into **4 REGIONS**

- Andean
- Steppe
- Valley
- Atlantic



Population
750.000



Total Area
203.013 Km2
26% of the Patagonia



Main Cities

San Carlos de Bariloche: **180.000**

General Roca: **150.000**

Cipolletti: **130.000**

Viedma: **80.000**



Access to the Mar Argentino

Golfo San Matías

Major rivers

- Negro
- Limay
- Colorado
- Neuquén



>> RÍO NEGRO

>> A diversified economy



PATAGONIAN PRODUCER

730,000 heads



64%

NATIONAL STOCK IS PATAGONIAN



Chubut

3.400.000 (31%)

Santa Cruz

2.400.000 (22%)

Río Negro

1.250.000 (11%).



2° LARGEST EXPORTER WORLDWIDE

48% OF SOUTHERN HEMISPHERE PRODUCTION

4% WORLD PRODUCTION

EXPORTATION RN

84% FRUITS AND DERIVATIVES



4° JURIDICION IN INFRASTRUCTURE FOR ACCOMMODATION

BARILOCHE

3° CITY WITH THE HIGHEST NUMBER OF OVERNIGHT STAYS AFTER OPENING COVID-19

Hotels and restaurants account for 4% of provincial GVA.



1° NATIONAL PRODUCER

Gypsum

600.000 tn/year

Diatomite

160.000 tn/year

Bentonite

150.000 tn/year

EXPORTATION 25%



35 AREAS IN OPERATION

5° OIL PRODUCER

7° GAS PRODUCER



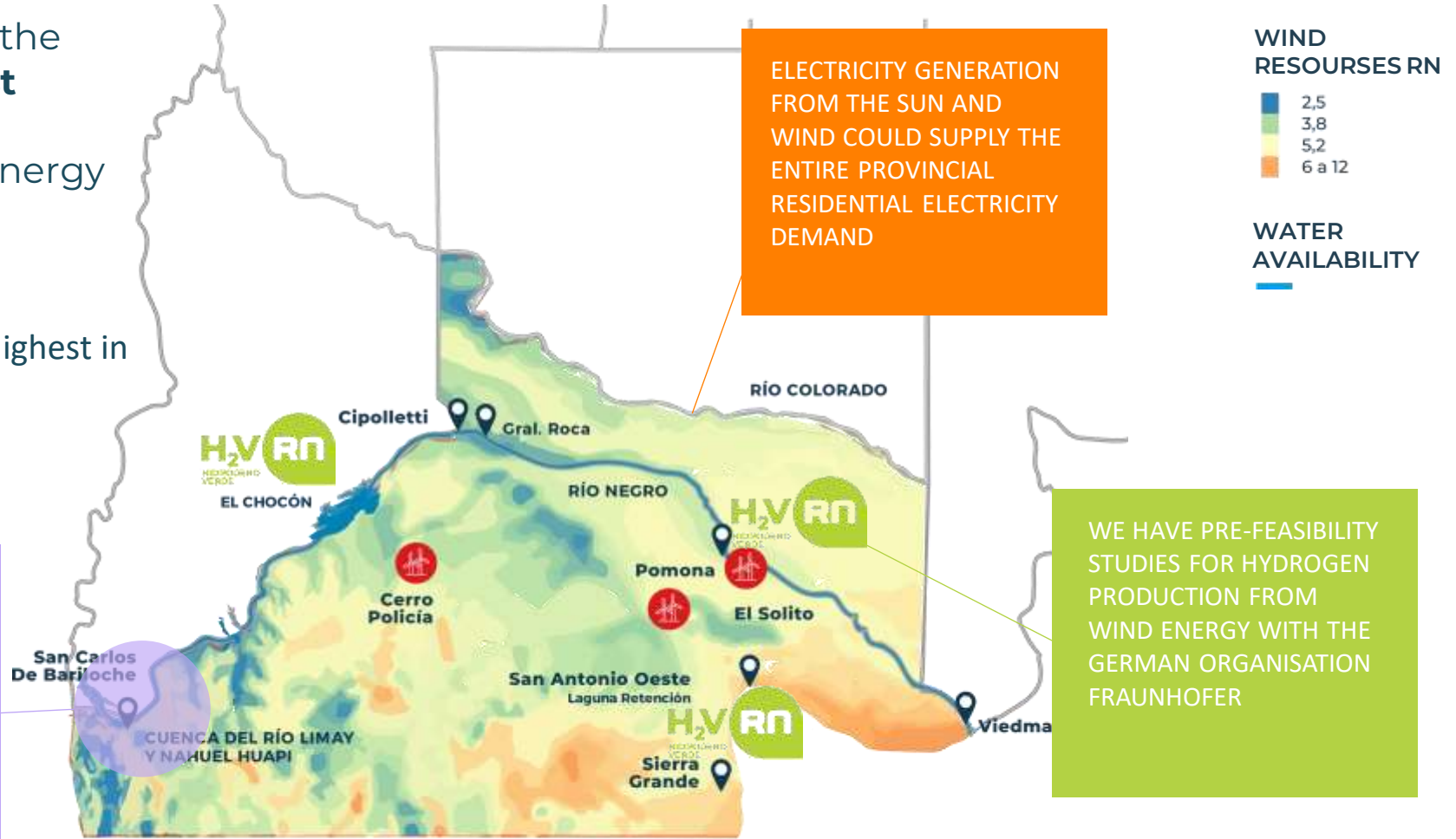
ENERGY TRANSITION

With Río Negro natural resources

Río Negro is one of the places with the **best conditions and opportunities** for energy transition..

Average wind speed:
8 to 12 m/s one of the highest in the world.

MORE THAN 50 WATERFALLS AND HYDROELECTRIC DAMS THAT COULD SUPPLY 55% OF THE ELECTRICITY DEMAND IN THE ANDEAN ZONE AND THE VALLEY



>> ENERGY TRANSITION

>> With Río Negro mineral resources

Río Negro has the presence of **usable minerals in conditions to be exploited** in order to facilitate the development of scenarios linked to a necessary **energy transition**.

The **design of public policies** for the sector seeks to **create certainty** around the possibility of **reliable and sustainable supplies** of these minerals.



>> MINERAL RESOURCES

>> In the Provincial Strategic Plan



70%

Surface of Río Negro



- ✓ **Geological formations** with the potential to contain **economically exploitable** mineral concentrations (deposits).
- ✓ Metalliferous **mining**, energy and industrial **wealth**.
- ✓ It has full autonomy and **ownership of its natural resources**.



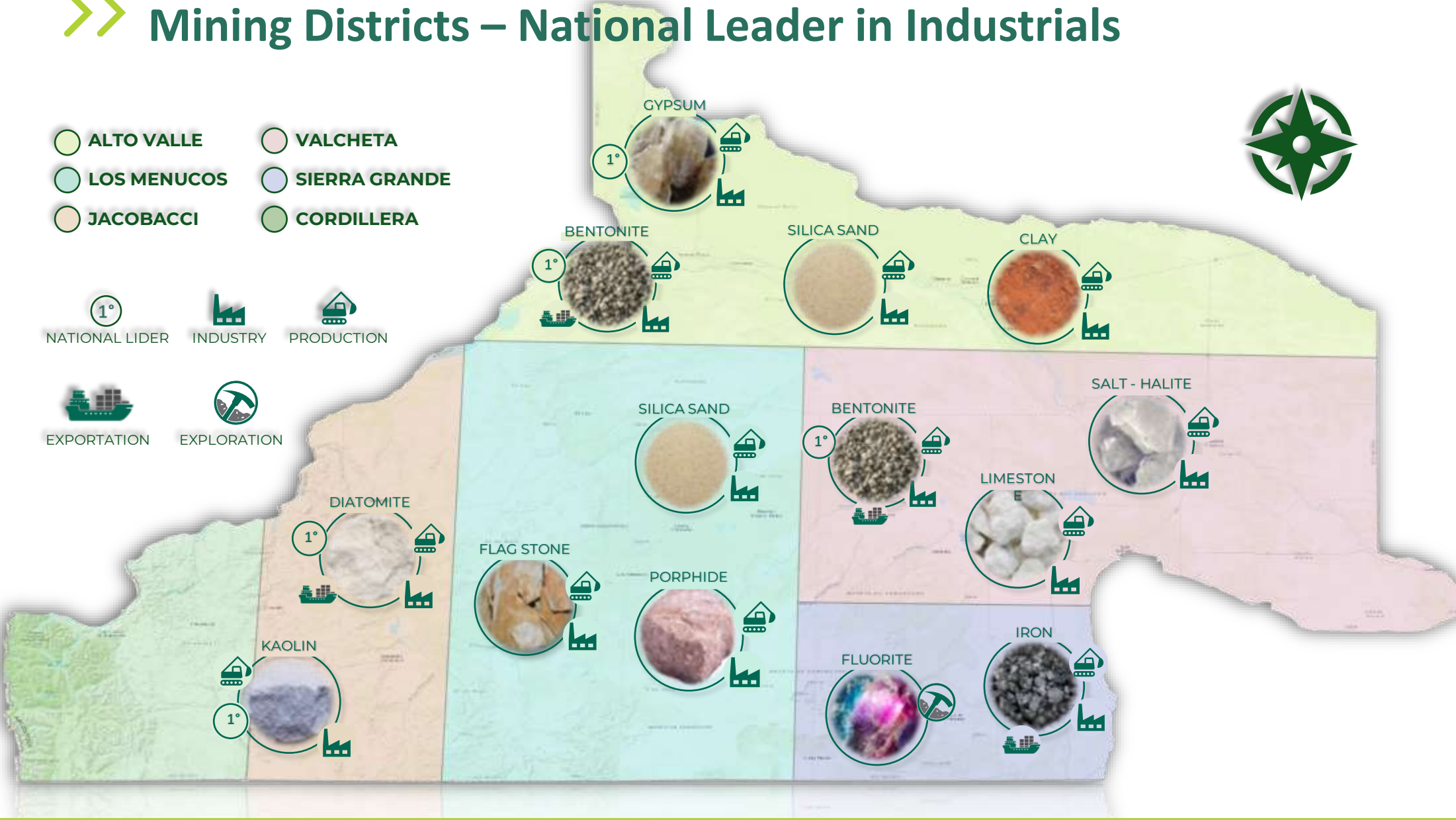
>>> PRODUCTION

>>> Mining Districts – National Leader in Industrials



- ALTO VALLE
- VALCHETA
- LOS MENUÇOS
- SIERRA GRANDE
- JACOBACCI
- CORDILLERA

- 1° NATIONAL LIDER
- INDUSTRY
- PRODUCTION
- EXPORTATION
- EXPLORATION



>>> PRODUCTION

>>> Siliceous sands of Río Negro

Nearby and proven **alternative**, with quarries only **300 kms** from the basin.

Expected future demand for sand by 2030 would **exceed 85% of current national production.**

More than **800 quarries** in Rio Negro..

4 ongoing projects and 3 washing plants



**30M U\$D
INVESTMENT**

1.5 M tn/year



**200M U\$D
INVESTMENT**

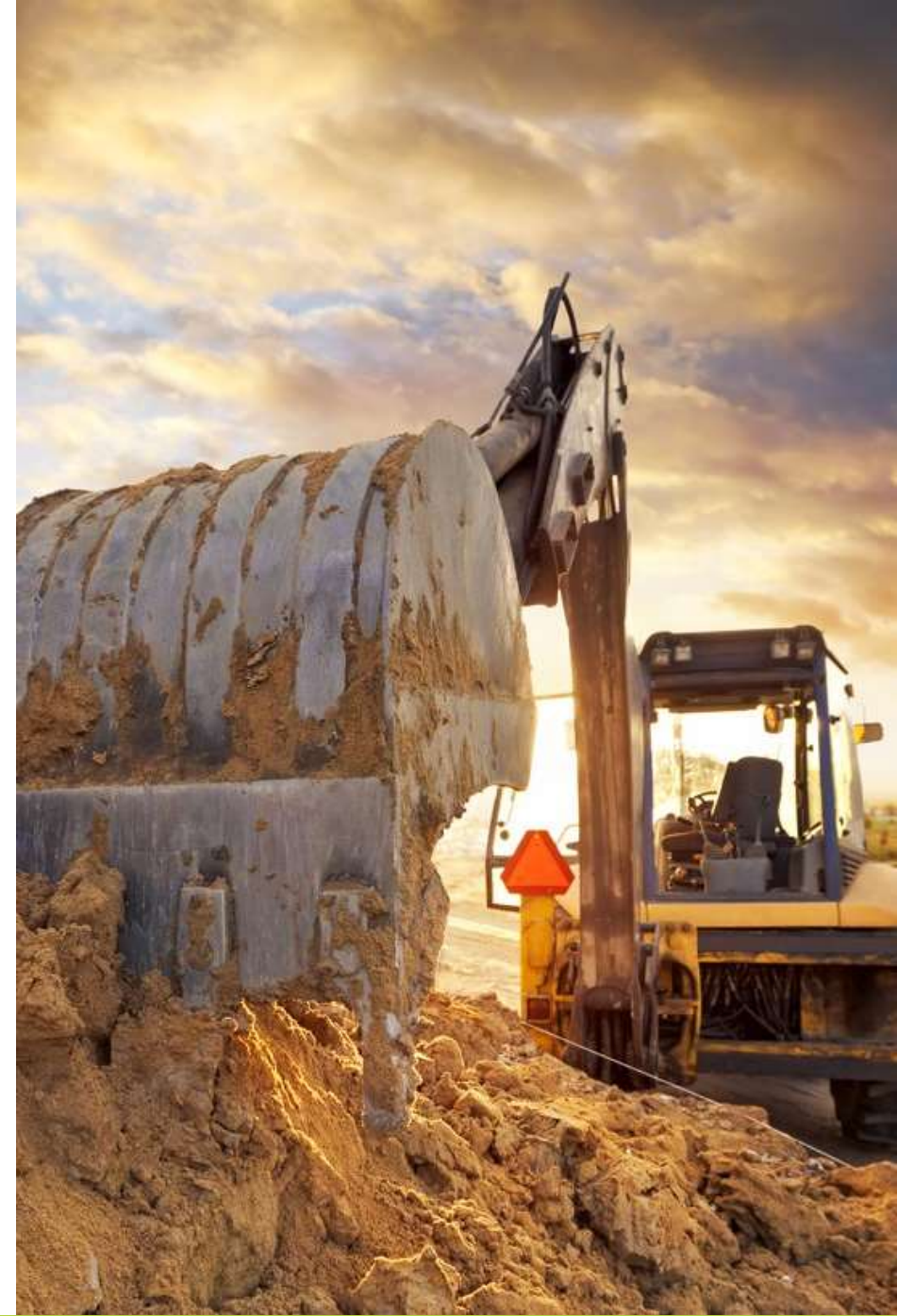
1M tn/year



**Aluvional
Logística**

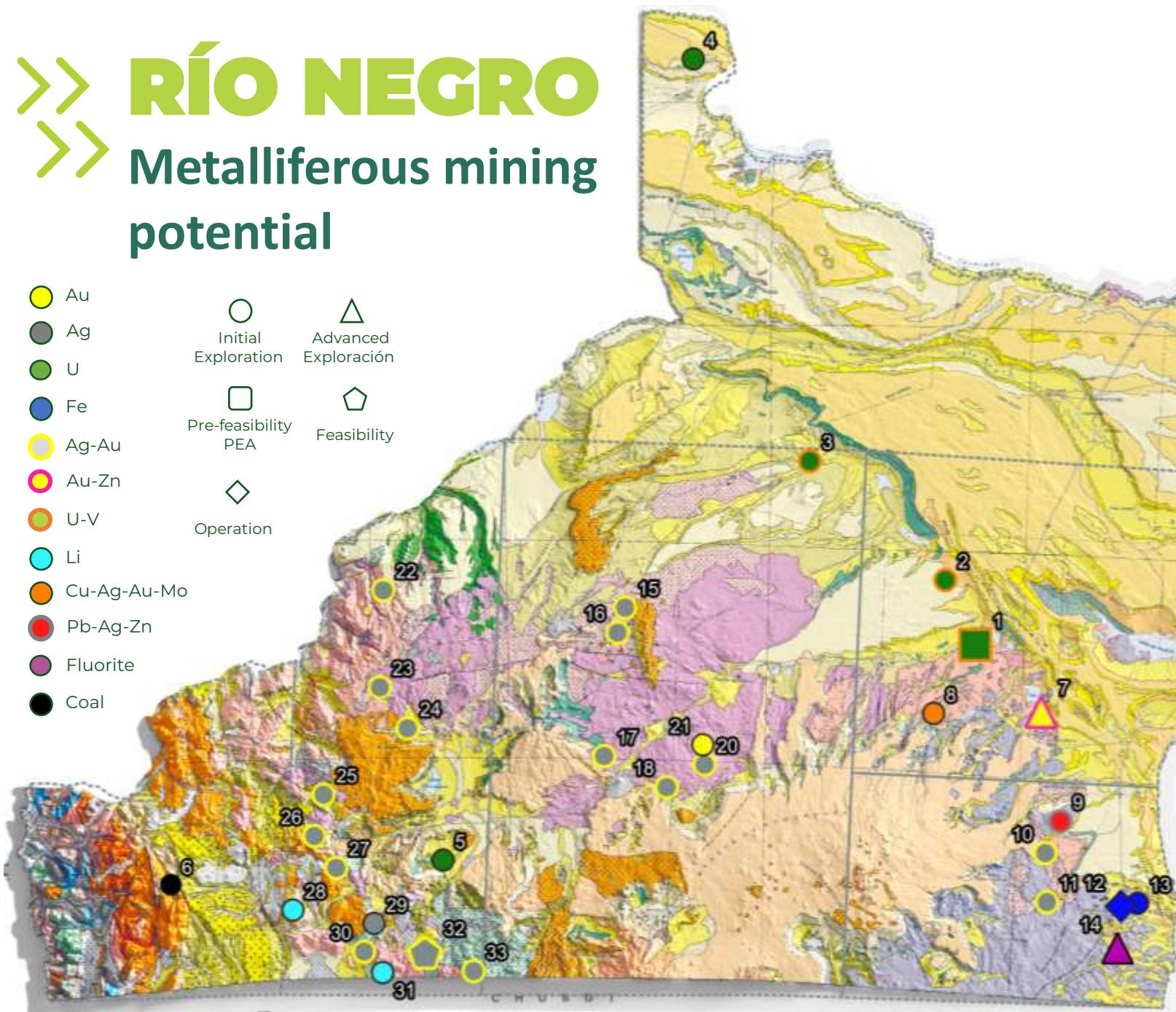
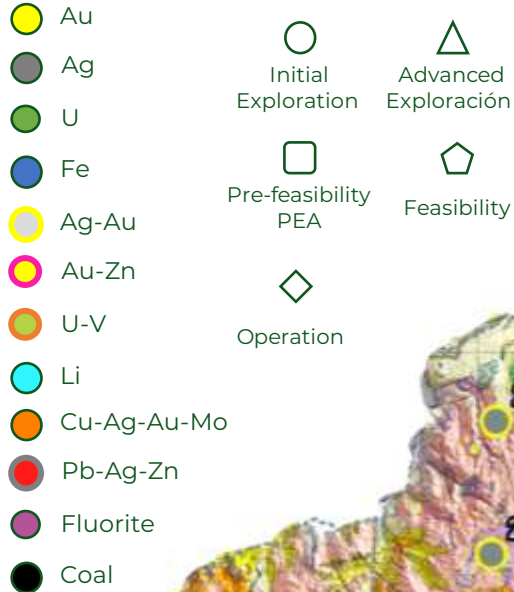
**16M U\$D
INVESTMENT**

**300.000
tn/year**



RÍO NEGRO

Metalliferous mining potential



- 1- 🇨🇦 MINERA CIELO AZUL (Ivana)
- 2- 🇨🇦 MINERA CIELO AZUL (Anit)
- 3- 🇨🇦 MINERA CIELO AZUL (Santa Barbara)
- 4- 🇨🇦 CNEA (Mari)
- 5- 🇨🇦 CNEA (Kaia)
- 6- 🇨🇦 TRENDIX MINING (Las Bayas)
- 7- 🇨🇦 MINERA SAN ROQUE (San Roque)
- 8- 🇨🇦 TRENDIX MINING (Valcheta)
- 9- 🇦🇺 AUSTRALIA PROSPECTING PARTNERS (AAP)
- 10- 🇦🇺 LELEQUE EXPLORACIONES (El Morro)
- 11- 🇦🇺 LELEQUE EXPLORACIONES (Tamariscos)
- 12- 🇨🇳 MCC (Sierra Grande)
- 13- 🇨🇦 ARGENTINA LITIO Y ENERGIA (Fiero)
- 14- 🇨🇳 HANAQ (Delta XXI)
- 15- 🇦🇺 VALCHETA EXPLORACIONES (La Esperanza)
- 16- 🇨🇦 SOUTHERN COPPER (La Esperanza)
- 17- 🇦🇺 VALCHETA EXPLORACIONES (Cuya)
- 18- 🇨🇦 RIO DE ORO (Caltruna)
- 19- 🇨🇦 SCRIN PROPERTIES LTD (Menucos)
- 20- 🇦🇺 LELEQUE EXPLORACIONES (Cerro Blanco)
- 21- 🇨🇦 TRENDIX MINING (Cerro Choique)
- 22- 🇦🇺 IVAEL MINING (Vista Alegre)
- 23- 🇨🇦 TRITON (Pilahue)
- 24- 🇨🇦 SOUTHERN COPPER (Cañadón del Moro)
- 25- 🇦🇺 IVAEL MINING (El Rosillo)
- 26- 🇦🇺 LOS DOMOS (Paredes)
- 27- 🇦🇺 IVAEL MINING (Buitrera)
- 28- 🇨🇦 ELECTRIC METALS (-)
- 29- 🇨🇦 NOSERMAN SILVER (Taquetrén)
- 30- 🇦🇺 LELEQUE EXPLORACIONES (Escondido)
- 31- 🇦🇺 CONDOR PROSPECTING (Lipetrén)
- 32- 🇨🇦 MINERA AQUILINE (Calcatreu)
- 33- 🇦🇺 LELEQUE EXPLORACIONES (El Duende)



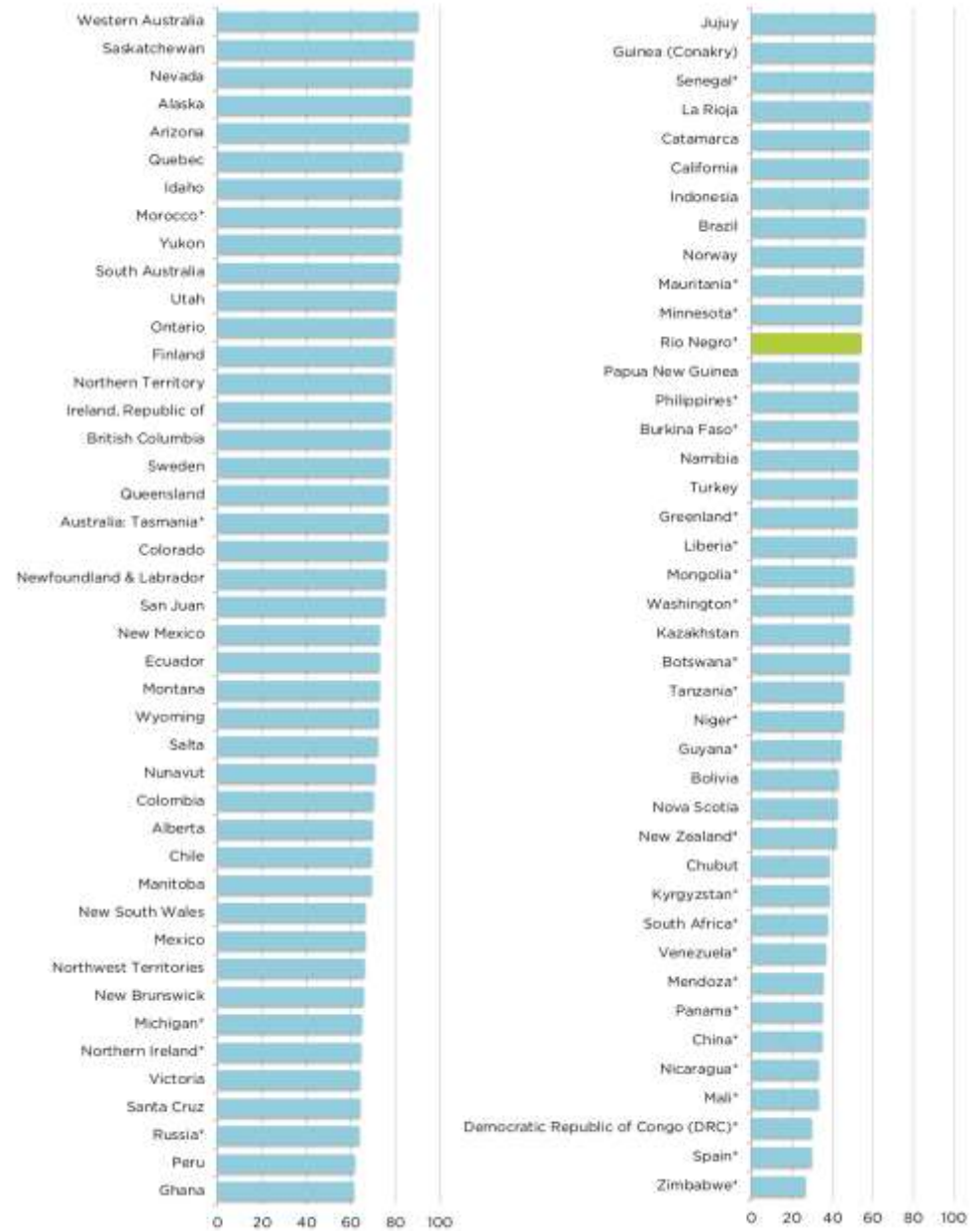
RÍO NEGRO

Ránking Fraser 2021

Fraser Institute annual sectoral survey of investment attractiveness of different jurisdictions

55° POSITION

SEVENTH JURISDICTION
ARGENTINE MINING
JURISDICTION



>> INVESTMENT ADVANTAGES

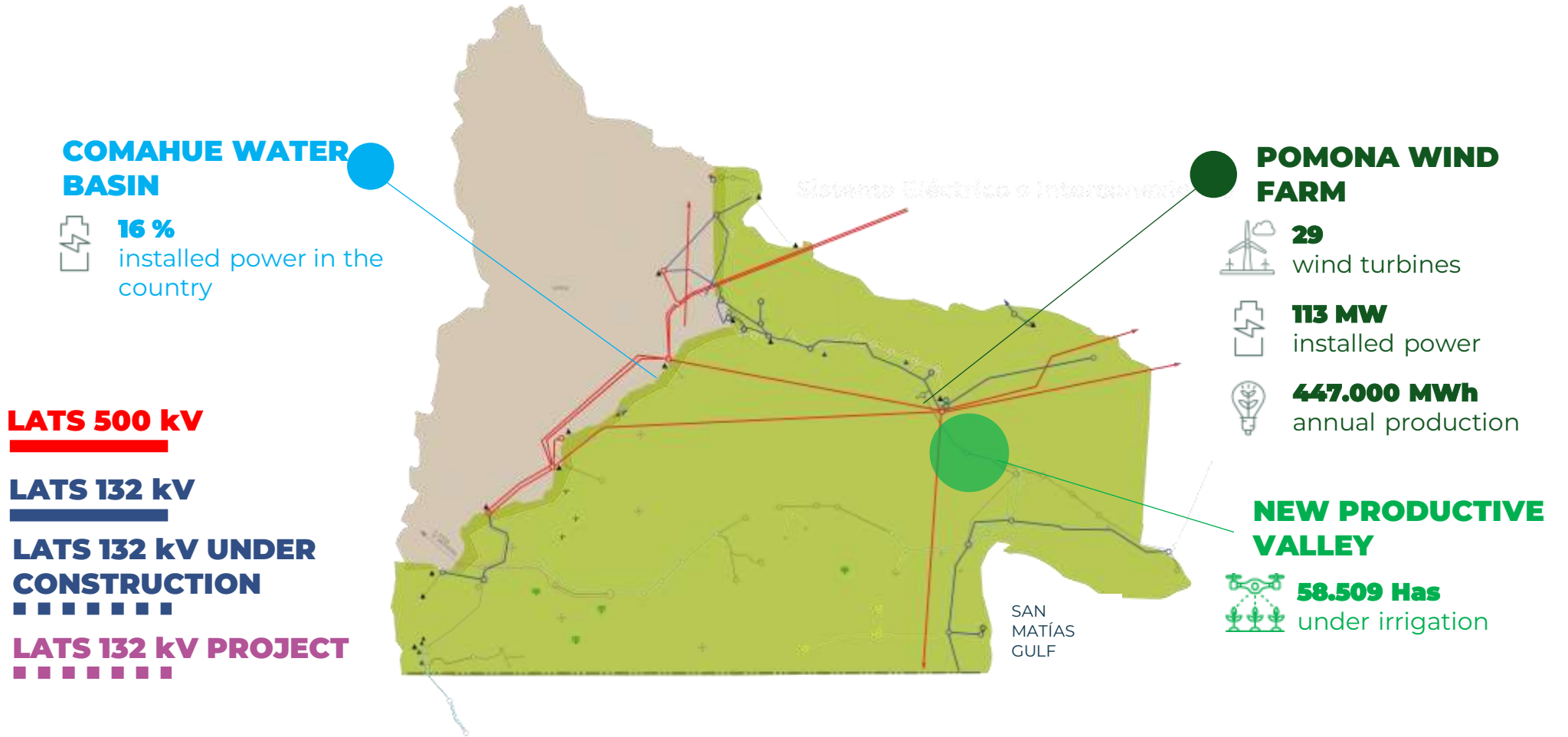
>> Broad and diverse connectivity

-  **BARILOCHE**
INTERNATIONAL AIRPORT
-  **VIEDMA**
FUTURE INTERNATIONAL AIRPORT
-  **PATAGONIAN TRAIN**
-  **SAN ANTONIO ESTE**
DEEP-WATER PORT
- PUNTA COLORADA**
MINERAL PORT
- INTERNATIONAL PASSAGE PUERTO MONTT**
- PACIFIC ACCESS**



>> INVESTMENT ADVANTAGES

>> High voltage electricity generation and transmission



INVESTMENT ADVANTAGES

Water as a natural resource

500 km

IN LENGHT

SURFACE AREA
OF THE BASIN

52.400 Km²

FLOW RATE

238
M³X SEG.

Limay River

380 km

IN LENGHT

SURFACE AREA
OF THE BASIN

22.000 Km²

FLOW RATE

538
M³X SEG.

16 %
power installed
in the country

**Nahuel Huapi
Basin**

37 km

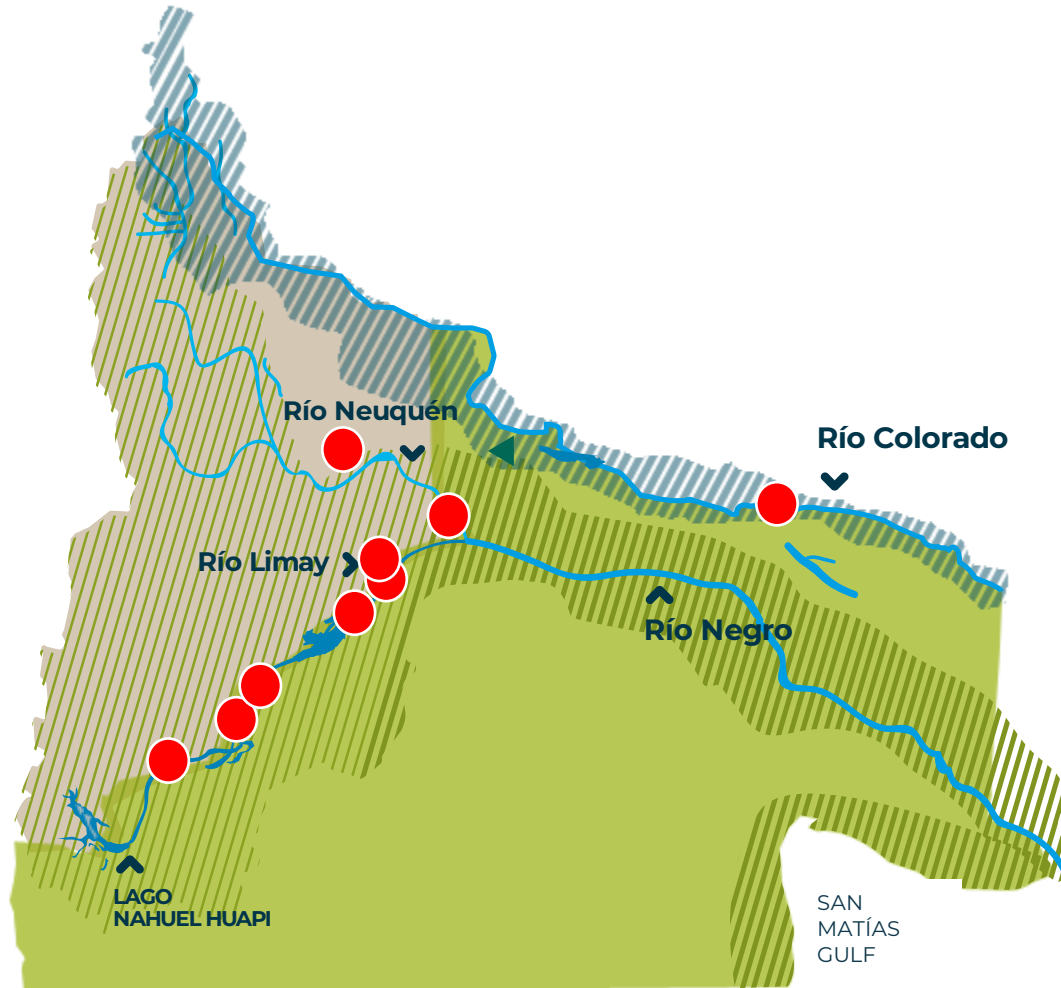
IN LENGHT

SURFACE AREA
OF THE BASIN

4260 KM²

FLOW RATE

187
M³X SEG.



1000 km

IN LENGHT

FLOW RATE

145
M³X SEG.

SURFACE AREA
OF THE BASIN

70.000 KM²

Río Negro

720 km

IN LENGHT

FLOW RATE

720
M³X SEG.

SURFACE AREA
OF THE BASIN

132.280 KM²

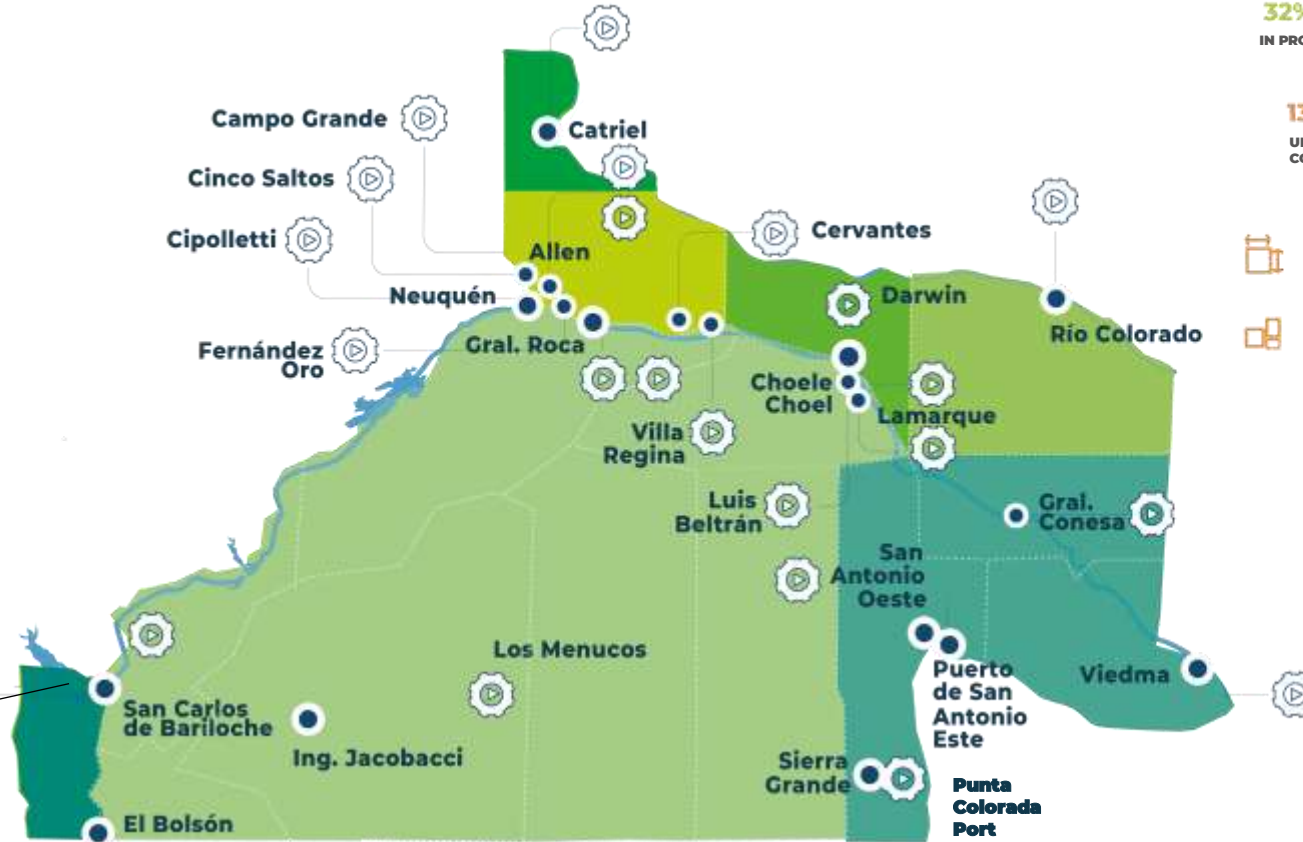


>>> VENTAJAS PARA LA >>> INVERSION

Industrial Parks

REFERENCES

- Norte
- Alto Valle
- Valle Medio
- Nordeste
- Línea Sur
- Atlántica
- Andina



650 COMPANIES
LOCATED IN RN



2.410 has
SURFACE

1.701 LOTES
PLOTING

PROJECT
1.250 has
NEW PARKS

ALLEN NORTE
GRAL ROCA II
LOS MENUCOS
DARWIN

CERVANTES
CAMPO GRANDE
GRAL. CONESA





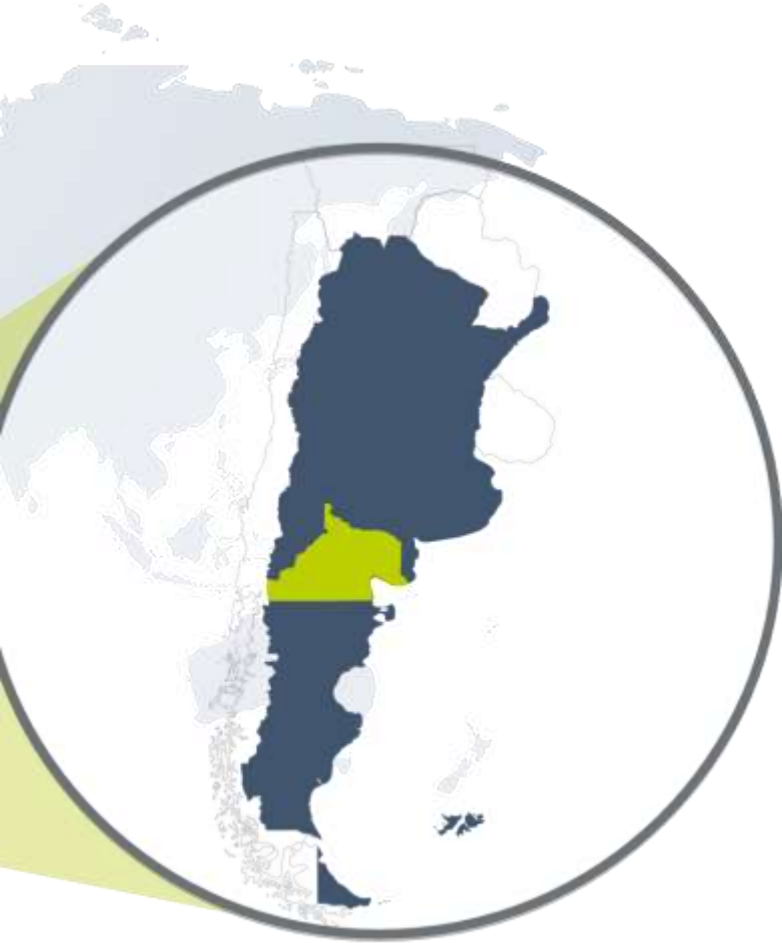
INDUSTRIAL ESTATES

Scientific and Technological Cluster - BARILOCHE



>>> LEGAL SECURITY

>>> National and Provincial Legal Framework

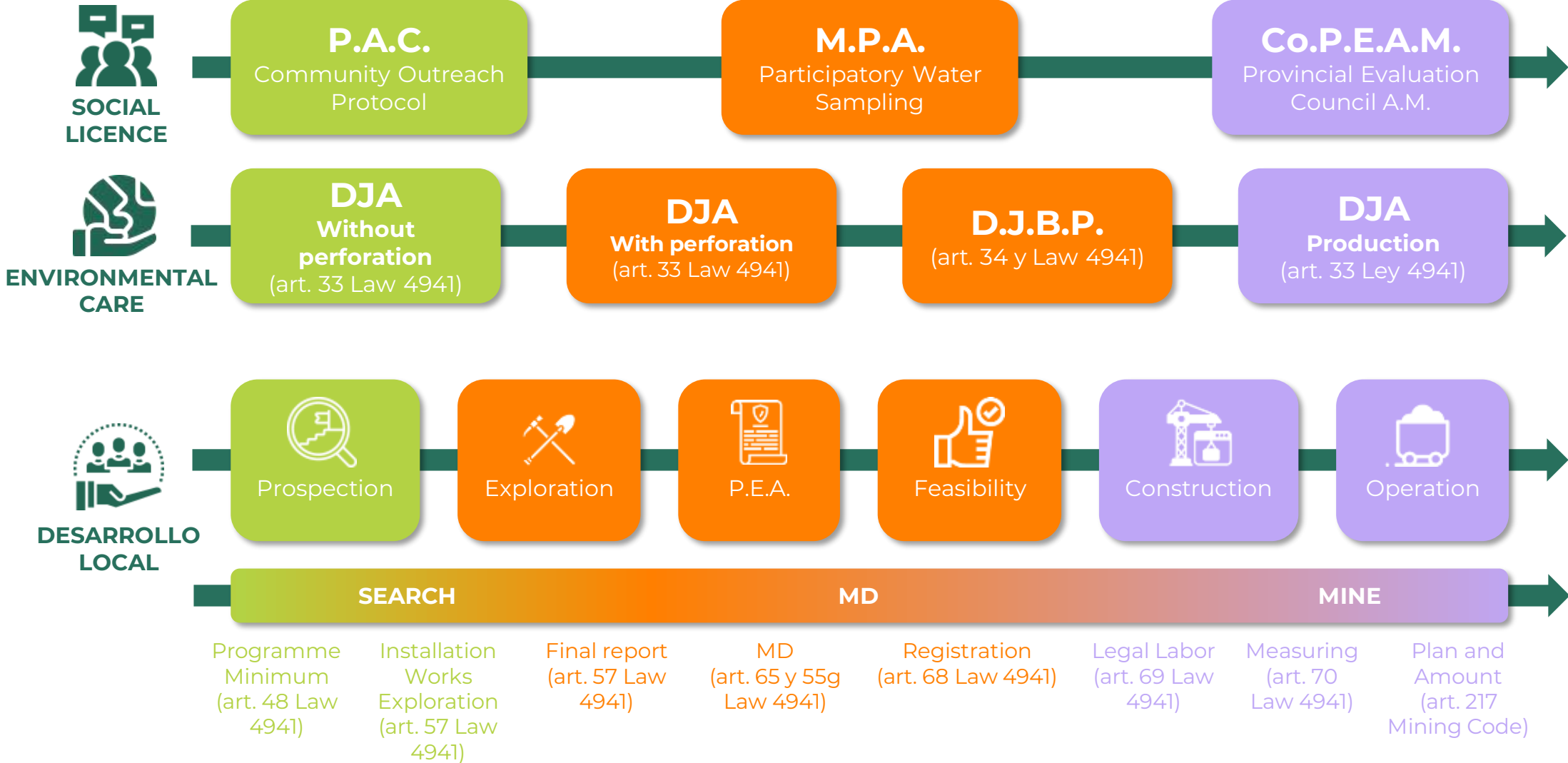


	FEDERAL GOVERNMENT	PROVINCES
Natural Resources		●
Mining Code	●	
Code of Mining Procedure - Mining Authority		●
Mining Concession and Permits		●
Mining Investment Law	●	
Provincial Mining Promotion		●
Environmental Regulations	●	●
Provincial Mining Environmental Assessment Board		●



PROJECT MILESTONES

Accompaniment, control and citizen participation

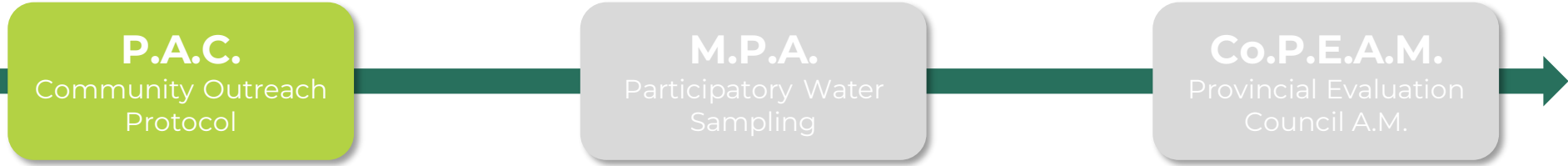


>> PROVINCIAL LEGAL FRAMEWORK

>> Community Outreach Protocol (P.A.C.)



SOCIAL
LICENCE



COMPLIANCE

Convention 169 OIT, effective participation of communities.

Escazú Agreement, environmental information, public participation

Gender policies applied transversally to all stages of the mining activity.

STAGES

Preliminary: Application for area to be explored, meeting with mining authority. With presentation of projects.

Outreach: Prior to the start of activities in the field, appropriate links should be established for the proper dissemination of information.

Development of activities: once the social relationship has been initiated.

Completion: Regardless of whether the company wishes to move forward with the work, care should be taken to maintain a strong and trusting relationship.

OBJECTIVE

Ensure good practices in the activity before, during and after the activity is carried out.

Accompanying the process of rapprochement between the Company and the Community.

To strengthen and materialise the pillar values, in order to generate a positive link with the community of interest.

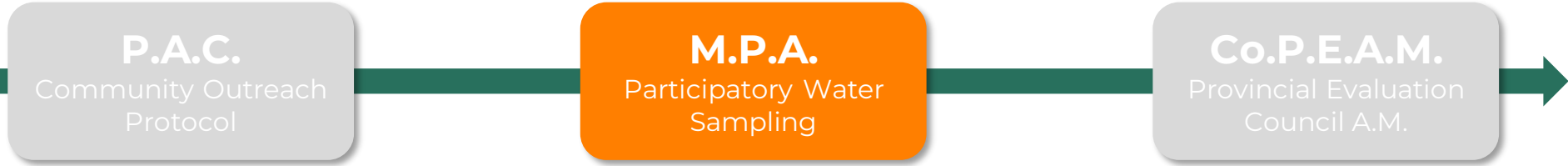


>> PROVINCIAL LEGAL FRAMEWORK

>> Participatory Water Sampling (M.P.A.) Res. AM N°252/2022



SOCIAL
LICENCE



STAGES

- 1° Before drilling begins
- 2° During drilling (mid-campaign)
- 3° After the end of the drilling campaign

PARTICIPANTS

Secretary of Mining (SecMin)
Secretaría Ambiente y Cambio Climático (SAyCC)
Departamento Provincial de Aguas (DPA)
Defensoría del Pueblo.
Intendant nearby locality
Circuit legislators.
Surfaces Owners/Landowners/Original Communities
Consejo de Desarrollo Indígenas (CoDeCi)

OBJETIVE

Environmental management tool
Citizen participation
Transparency
Publicity
Environmental Commitment



>> PROVINCIAL LEGAL FRAMEWORK

>> Provincial Mining Environmental Assessment Board. Law N°4.738.



P.A.C.
Community Outreach
Protocol

M.P.A.
Participatory Water
Sampling

Co.P.E.A.M.
Provincial Evaluation
Council A.M.

INTEGRATION

- Energy Secretary
- (1) Secretary of Mining
- (1) Secretary of Environment
- (3) Legislators
- (1) Representative of the municipality
- (1) UNRN Representative
- (1) NGO Representative
- (1) Native people's representative
- (1) INVAP Representative

**Authorities
Application**

PROCEDURE

- Environmental Impact Assessment (EIA)
- Technical opinion (T.D.) of the Mining Sec.
- Opinion of SAyCC
- Council Concluding Opinion
- Public hearing prior to environmental authorisation

OBJECTIVE

- Constructive participation of technical-scientific representatives
- Minimising environmental risks
- Prior and informed consultation with the public
- Transparency
- Legality and legitimacy of projects



>>> SOCIAL LICENCE



INVESTMENTS
600.000 U\$D

WHICH INSTITUTIONS ARE INVOLVED?



>> ENVIRONMENTAL CARE

>> Spatial Data Infrastructure

Work is being carried out with INVAP on the development of a **software** with **Artificial Intelligence** that will allow **remote satellite sweeps** to optimise resources and facilitate decision making.

It has a mobile section, **adapted for inspectors mobile phones**, which will allow them to consult the mining cadastre and the files of each mining producer in real time.

Investment in excess of
800.000 U\$D

INVAP

ALTEC

amazon



4070 sayılı kanun gereğince güvenli elektronik imza ile imzalanmıştır. ID:F557409B8B0843F55740. Bu kod ile <http://evrak.tim.org.tr/> adresinden doğrulayabilirsiniz.

RN
RIO NEGRO
PURA ENERGIA

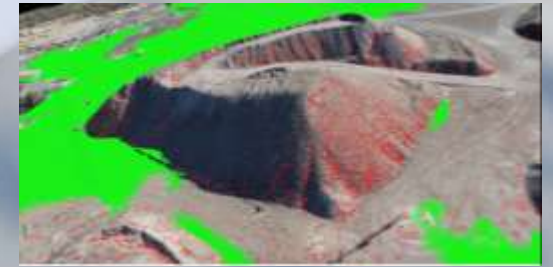
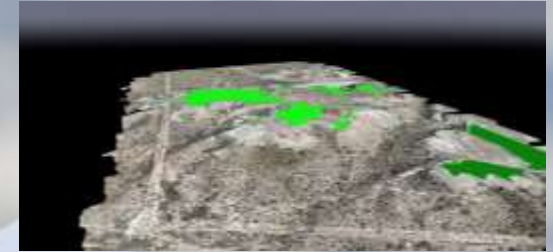
ENVIRONMENTAL CARE



Drones for cubing and surveying



- ✓ Innovation
- ✓ Accuracy
- ✓ Efficiency



RÍO NEGRO

Expanding Frontiers for Mining
Development in Patagonia



THANK YOU

5070 sayılı kanun gereğince güvenli elektronik imza ile imzalanmıştır. ID: F557409B8B0843F55740. Bu kod ile <http://evrak.tim.org.tr/> adresinden doğrulayabilirsiniz.



**LICENSE/SOCIAL
CONSENSUS**
(pre-existing rights)



ENVIRONMENTAL CARE



**LOCAL
DEVELOPMENT/PROGRESS**
(suppliers and employment)

